

2,3 million inhabitants – 3,4 million by 2050

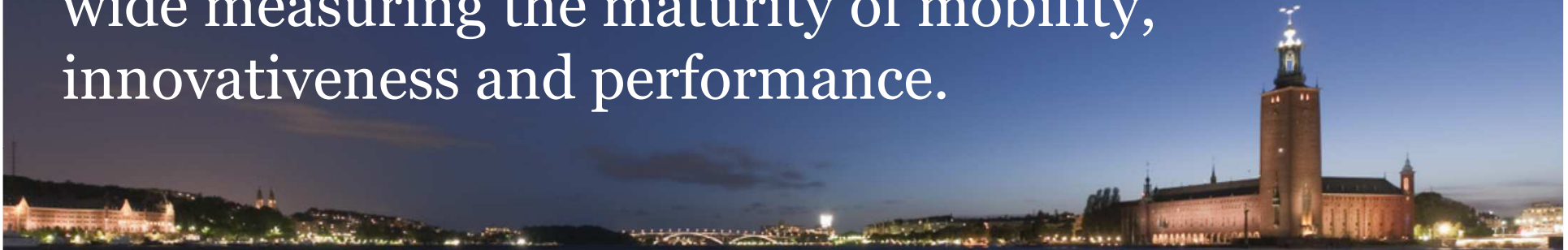
**Nearly
1 million
travelers every
day**

**A market
share of 82 %
in the peak
hour**

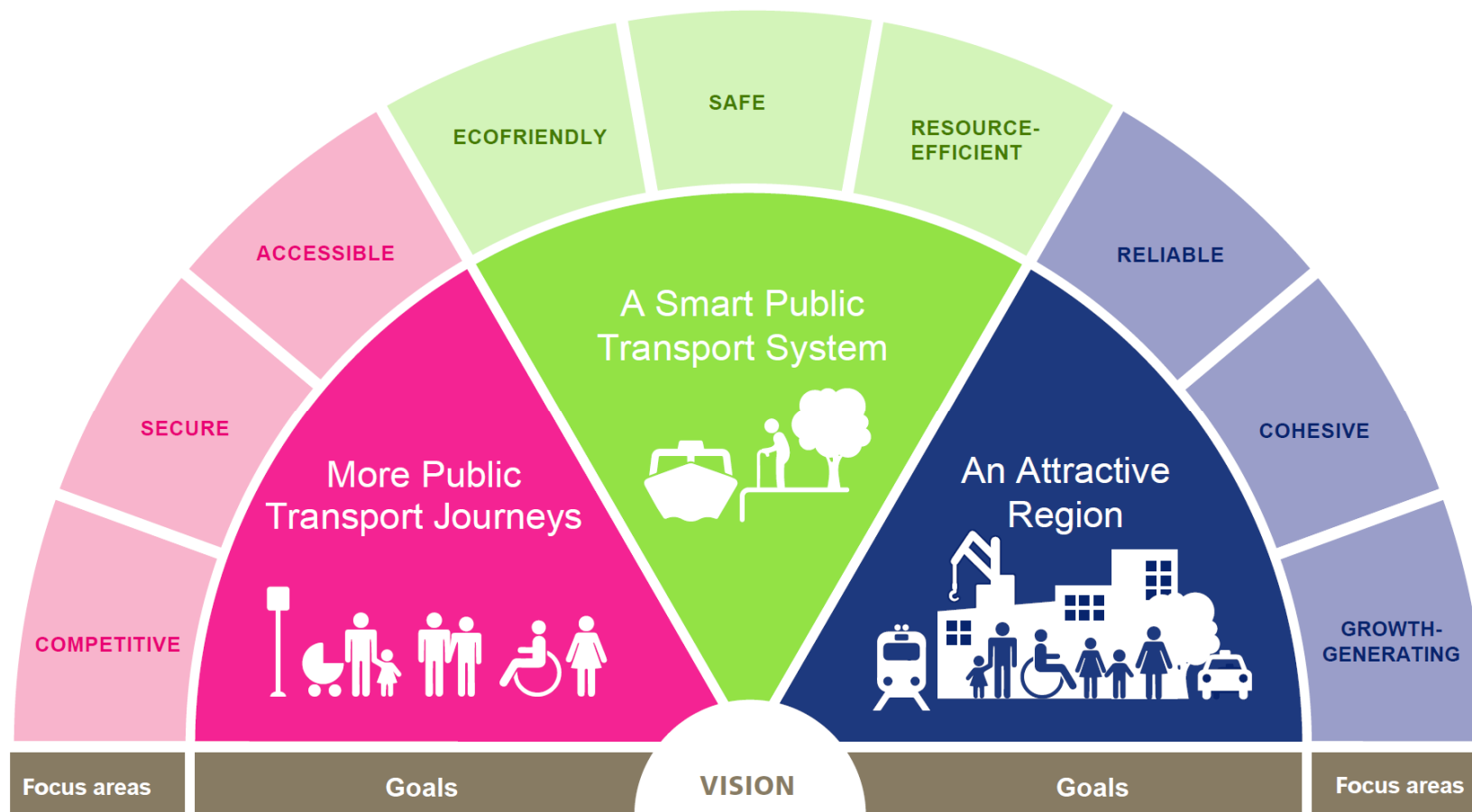
**99%
of the bus traffic
is run on
renewable energy**

**100%
of the rail road
traffic is run on
renewable energy**

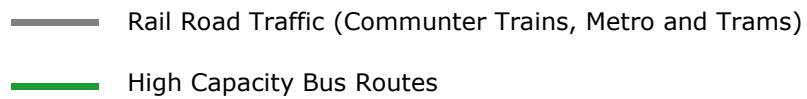
The region of Stockholm got the second highest mobility score of 100 cities world wide measuring the maturity of mobility, innovativeness and performance.













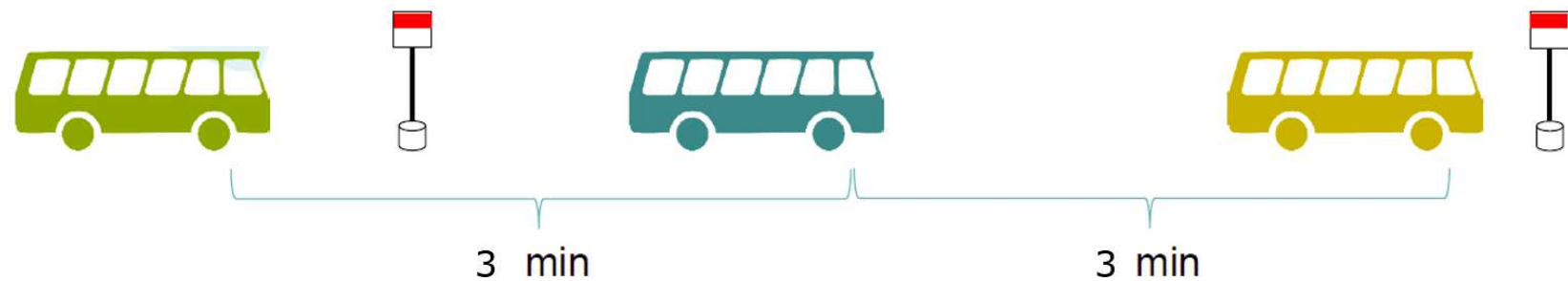
Bus Bunching and Bus Service Regularity



Bus Bunching and Bus Service Regularity



Bus Bunching and Bus Service Regularity





Siri Brolén, Accessibility Strategist
siri.brolen@sll.se