

The Atlanta BeltLine:

Urban Regeneration
and Equitable,
Sustainable Mobility

9th International Cities for
Mobility Congress

City of Stuttgart

Henry Ikwut-Ukwa
Director of Transportation



New Ideas for Old Infrastructure

Belt Line - Atlanta
Design of Infrastructure

as a Reflection of Public Policy

presented to the faculty of the Division of
Graduate Studies

by **Ryan Austin Gravel**

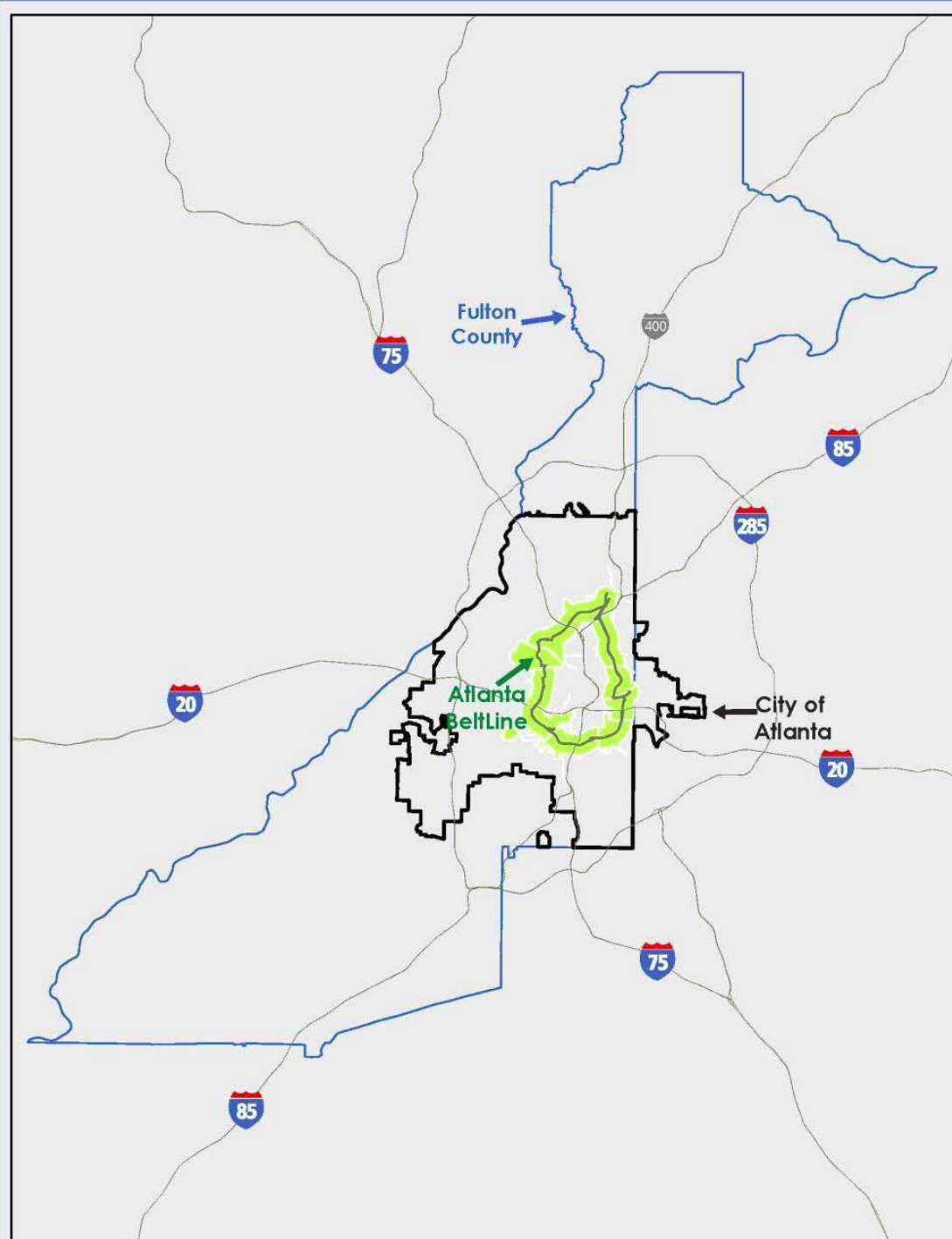
in partial fulfillment of the requirements for the
degrees of **Master of Architecture &
Master of City Planning**
in the College of Architecture

the Georgia Institute of Technology

December 1999



- Framework for a multi-use and transit corridor in the heart of the region
- Links many of Atlanta's historical landmarks and cultural destinations
- Connects four historic rail corridors

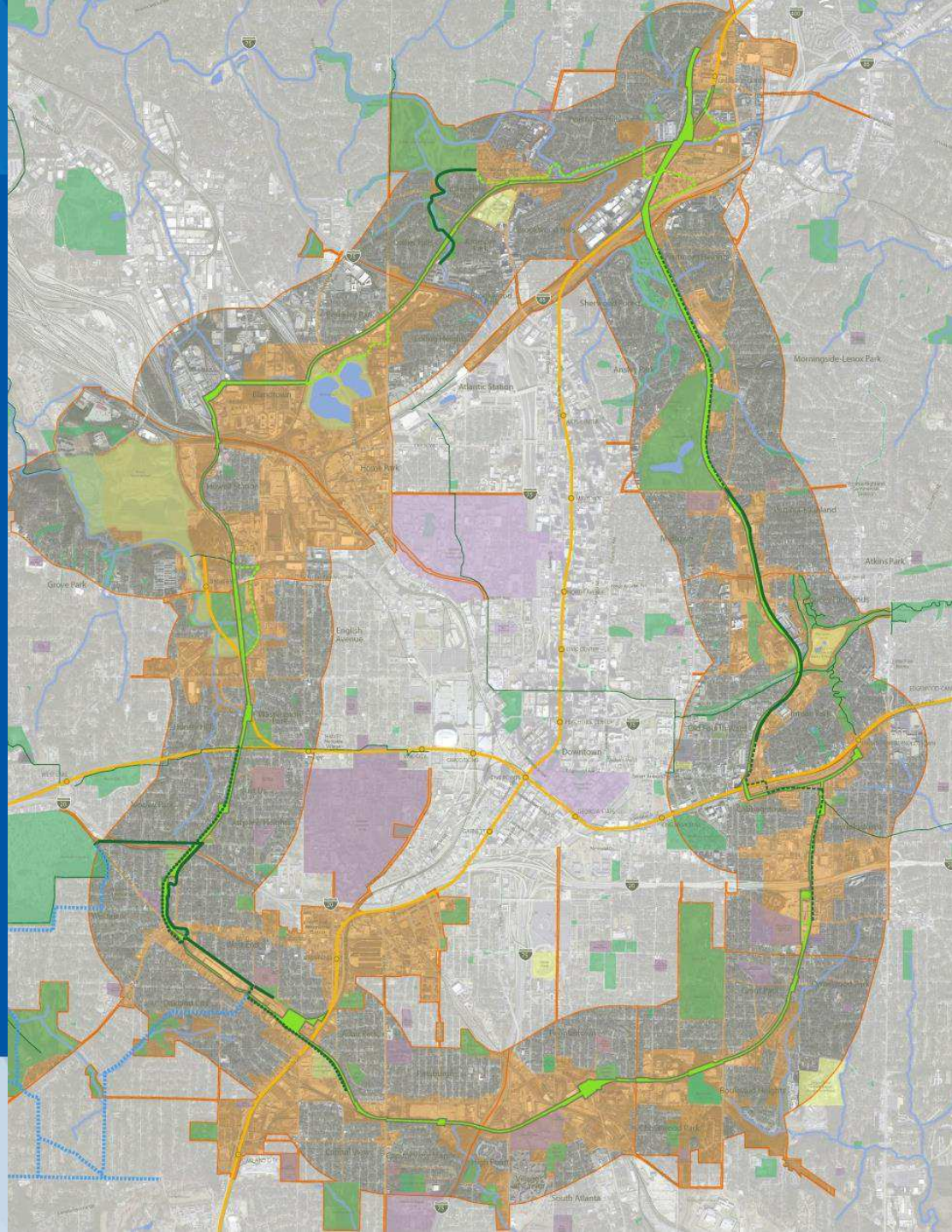


- The Atlanta BeltLine TAD

 Area: 6,500 acres

 Part of Total Planning area: 15,000 acres

- 22% of the City of Atlanta population is within the planning area
- 19% of the City's land is within the planning area



22 miles, connecting 45 neighborhoods



22
MILES
of transit



1,100
ACRES
of environmental
clean-up



46
MILES
of streetscapes and
complete streets



\$10-20B
in economic
development
30,000 permanent
jobs **48,000** construction
jobs



33
MILES
of urban trails



28,000
new housing units
5,600
affordable units



1,300
ACRES
of new greenspace
700
ACRES
of renovated greenspace

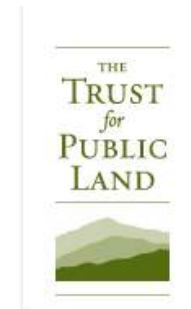


**CORRIDOR-
WIDE**
public art,
historic preservation,
and arboretum

Organizational Structure

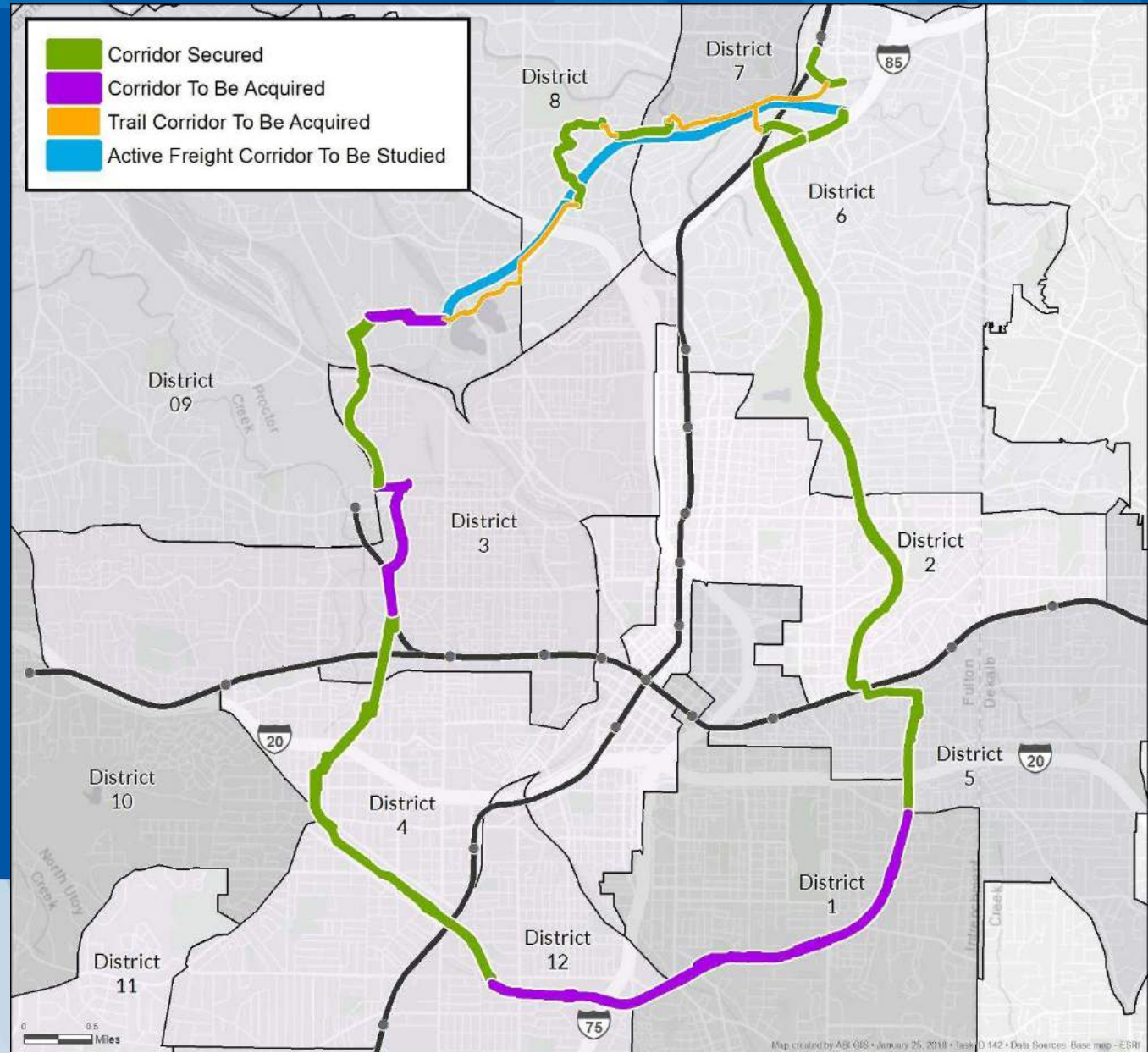


Strategic Partnerships



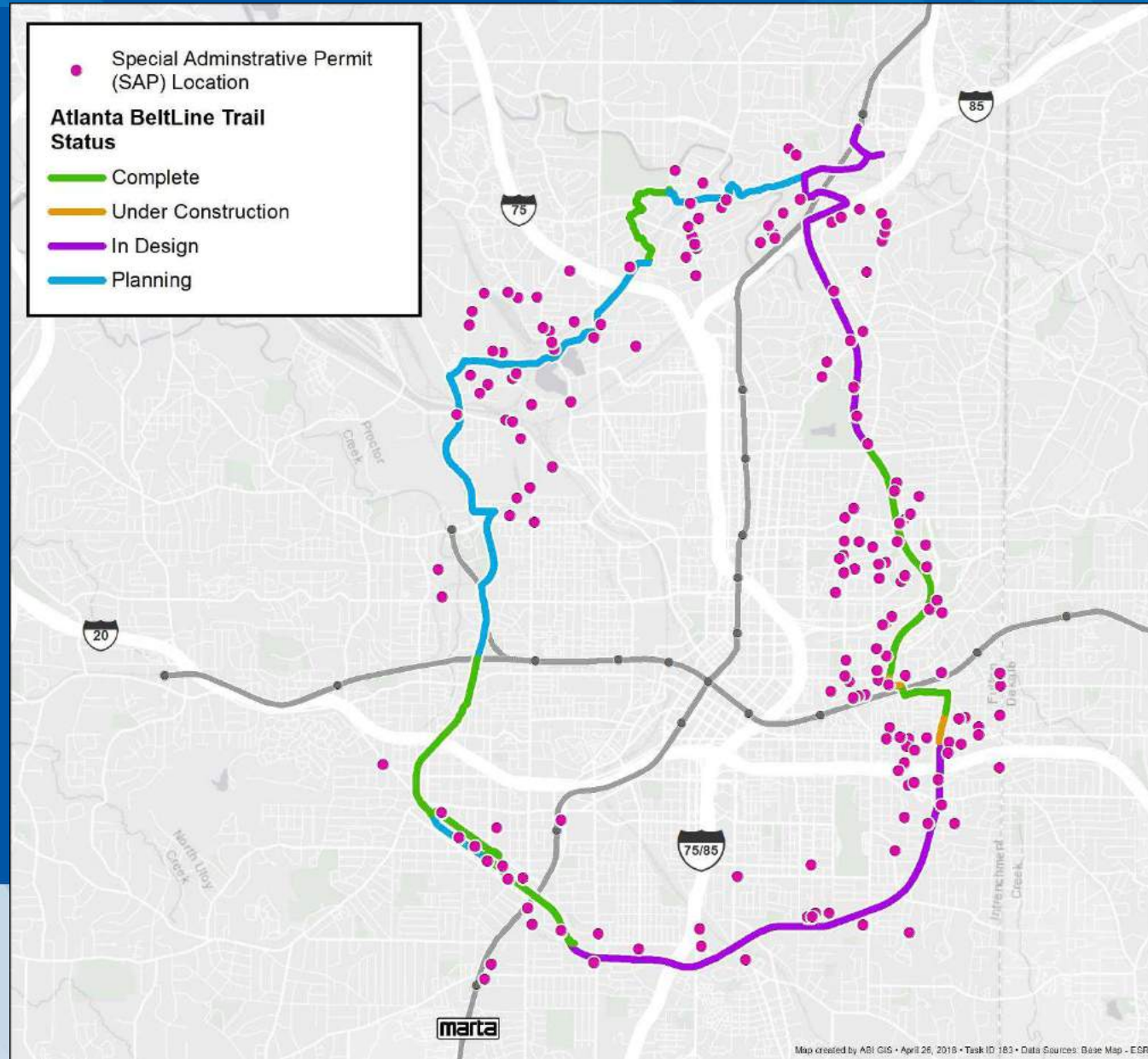
Open the Loop

- Acquire remaining corridor
 - \$60 million TSPLOST funds
- Open entire corridor as finished & interim trails



Trail Activity

- Development activity surrounding current & future trails



Economic Development



WHERE WE ARE NOW

- **11,200** permanent jobs through 2015
- **29,500** one-year construction jobs through 2017
- **\$4.1 billion (8:1)** total economic development to date
 - **\$350 million** investment in project to date

GOALS

- Advance Murphy Crossing Activation
- Existing Business Expansion & Retention
- New Business Attraction & Creation
- Advance Workforce Development Partnerships

Affordable Housing



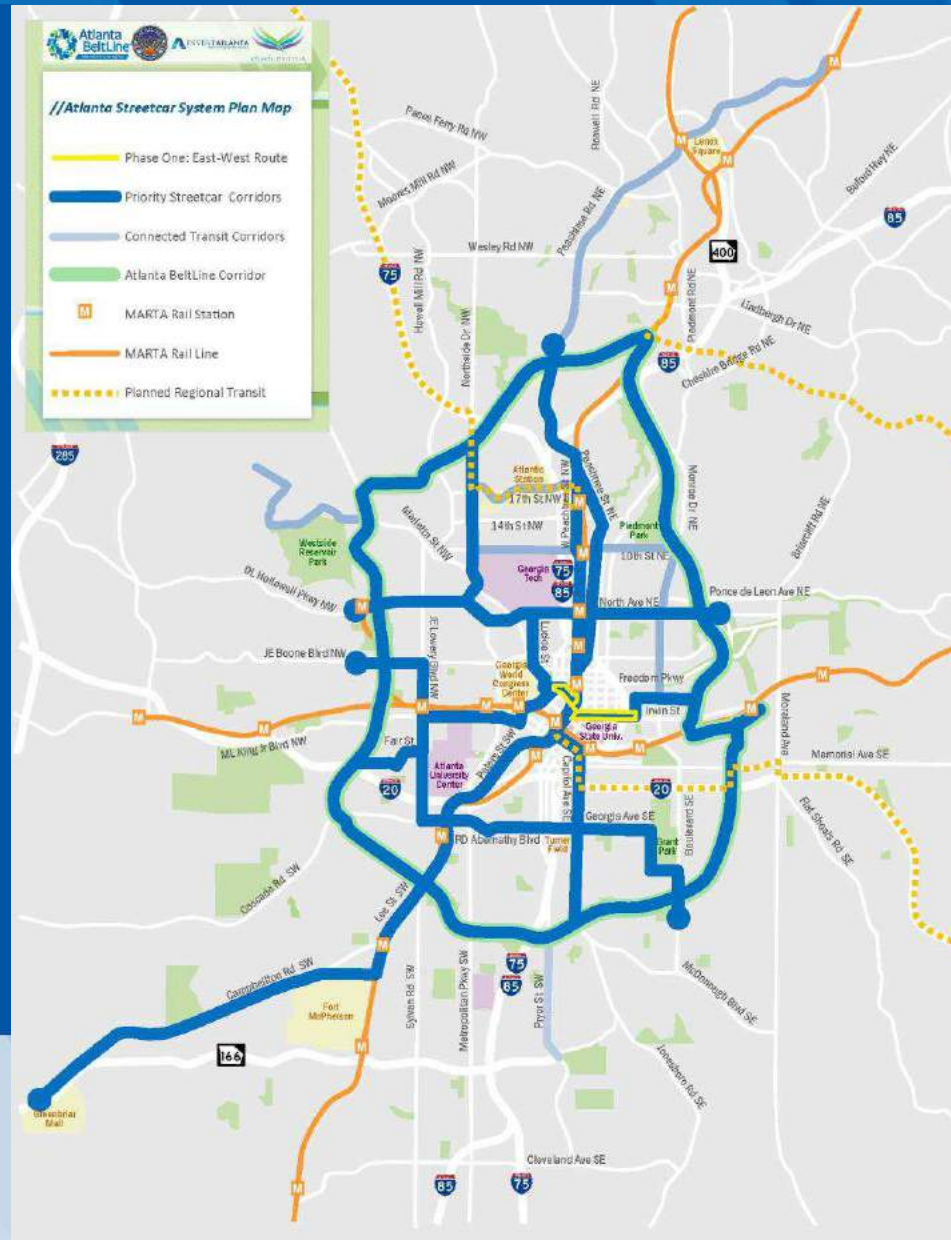
WHERE WE ARE NOW

- **2,565** affordable units in TAD and Planning area supported by Invest Atlanta, ABI, Atlanta Housing Authority, and Georgia Department of Community Affairs
- **17,102** market rate units in TAD and Planning Area
- **11,343** market rate units in TAD
- **822** affordable units in TAD

Atlanta Light Rail System Plan



- Atlanta Light Rail Transit Program
- 50+ Miles
- Adopted December 8, 2015



Atlanta BeltLine Transit Planning

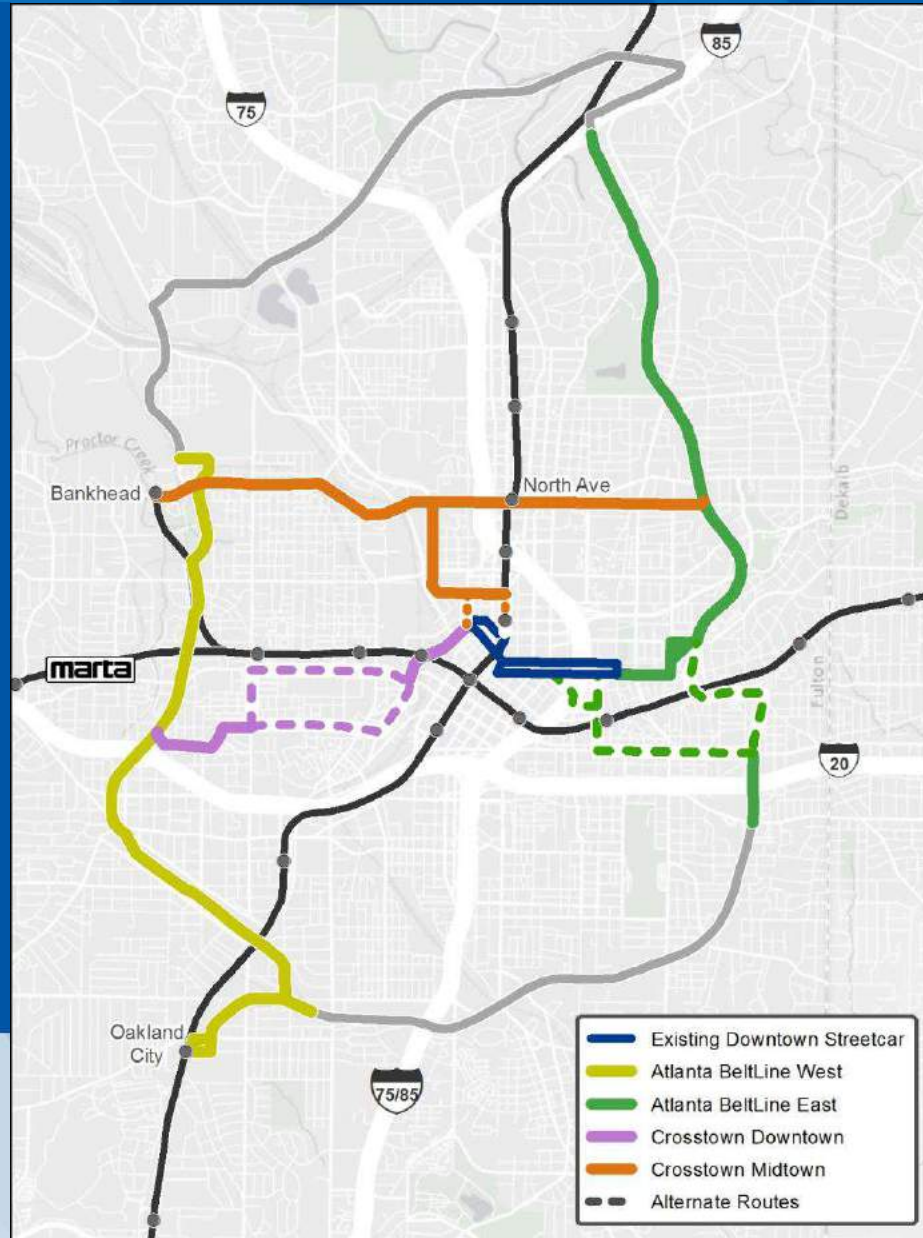
History

- 1999: Ryan Gravel's Thesis – *New Ideas for Old Infrastructure*
- 2003: MARTA's Inner Core Transit Study - *Is this Possible?*
- **2006: ABI's Enabling Legislation – Getting into Action**
- 2008: Connect Atlanta Transportation Plan – *The Big Picture*
- 2012: Concept 3 Regional Transit Plan – *Aspirational Possibilities*
- 2012: Tier I EIS Record of Decision – *Corridor Preservation*
- 2013: Atlanta BeltLine Strategic Implementation Plan – *It's a Process*
- 2014: Streetcar A-Line Service Opens – *First Bite at the Elephant*
- 2015: Streetcar System Plan Adopted By City Council – *Making it Work*
- 2016: Atlanta's Transit Sales Tax Approved – *Show Me the Money*
- 2018: Tier II NEPA Wrapping Up (16 Miles In-Street / BeltLine Corridor)
- **2018: Transit Sales Tax Project Prioritization Task Force**

NEPA - Transit Alignments



- 4 Corridors
 - Atlanta BeltLine East
 - Atlanta BeltLine West
 - Crosstown Midtown
 - Crosstown Downtown
- 18 Miles
- 4 Connections to MARTA Rail



Historic Fourth Ward Park, Before



Historic Fourth Ward Park, After



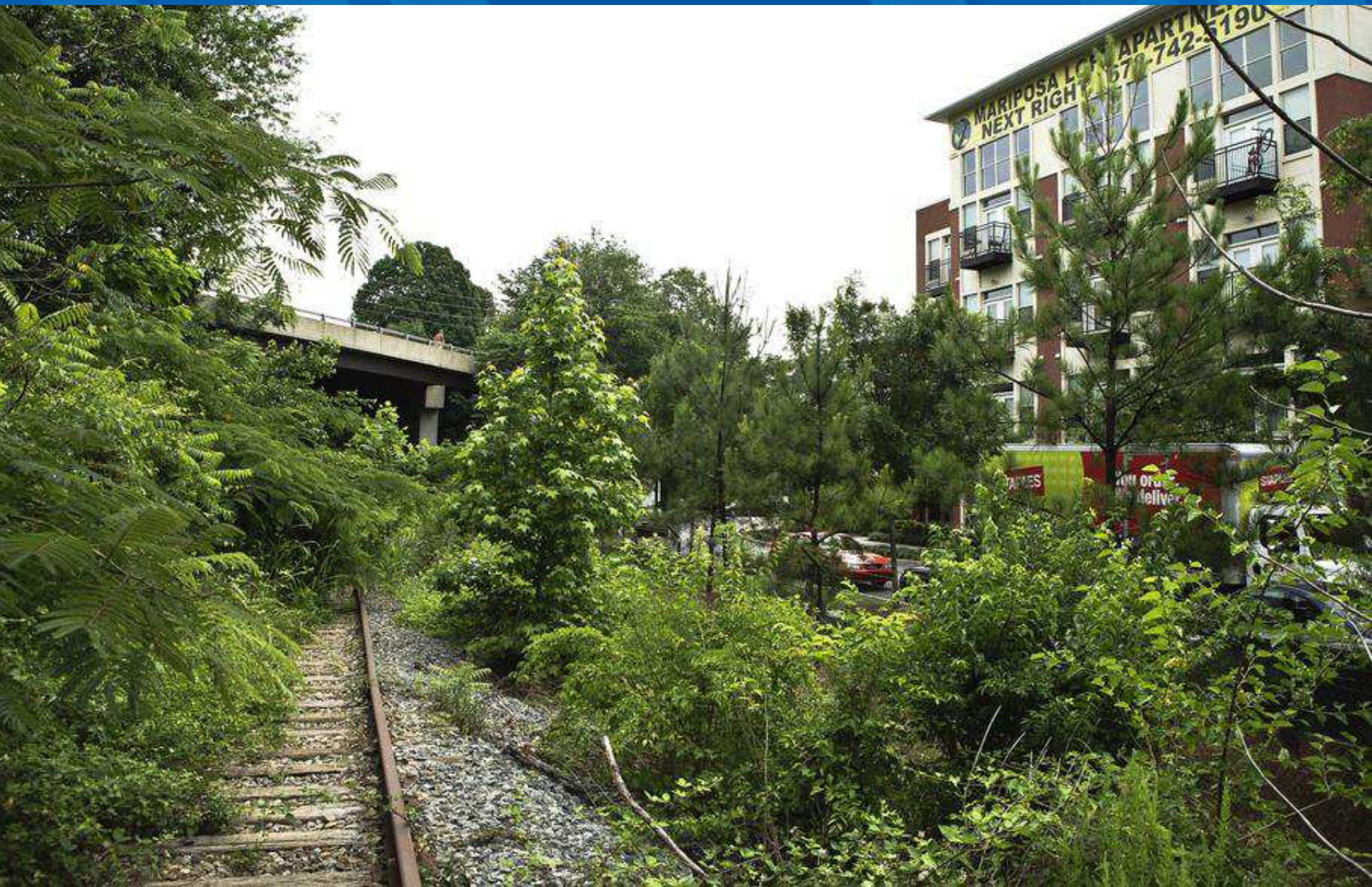
Historic Fourth Ward Park, Before



Historic Fourth Ward Park, After



Eastside Trail: Past



Eastside Trail: Current



Eastside Trail: Future



Eastside Trail: Past



Eastside Trail: Current



Eastside Trail: Future



Westside Trail: Past



Westside Trail: Current



Westside Trail: Future



Westside Trail: Past



Westside Trail: Current



Westside Trail: Future



Westside Trail: Past



Westside Trail: Current



Westside Trail: Future



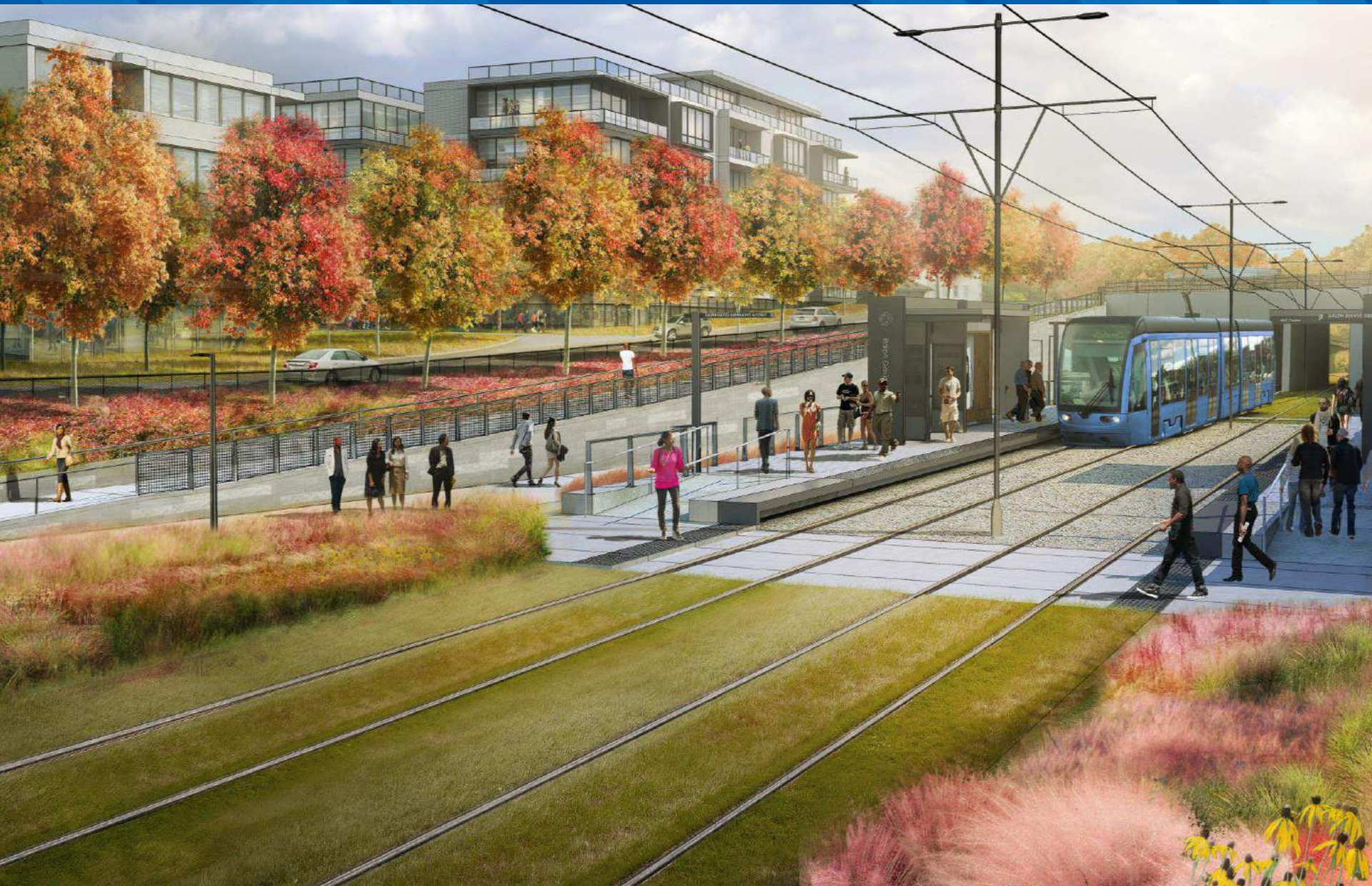
Westside Trail: Before



Westside Trail: Current



Westside Trail: Future



Thank you!



@AtlantaBeltLine // engage@atlbeltline.org